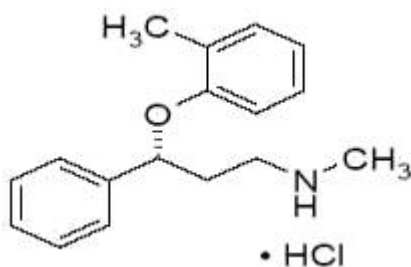


SPECIFICATIONS

ATOMOXETINE HCL

Chemical Structure:



Quality Specification:

Appearance: White or off-white crystalline powder

Identification: Complies

PH(0.5% H_2O): 5.0~7.0

Loss on Drying: ≤ 0.5 %

Melting Point: 168-172°C

Specific Rotation: -37.0~-44.0°

Sulfated Ash: ≤ 0.1 %

Heavy Metals: ≤ 20 ppm

Total impurities: ≤ 1.0 %

Assay (HPLC): ≥ 99.0 %